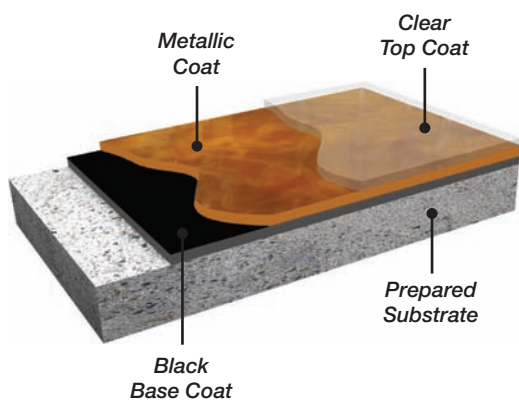


ALPEN-GLOW™

Incorporates highly refined metallic pigments with Sparta-Flex® polyaspartics to provide brilliant color variation and depth. Alpen-Glow™ may be manipulated to provide custom finishes to match any environment.



- Retail Showrooms
- Car Dealerships
- Stadium Concourses
- Healthcare
- Education
- Event Centers
- Entry-Ways and Lobbies
- Residential Garages



ALPEN-GLOW™

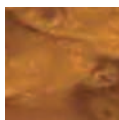
SYSTEM FEATURES & BENEFITS:

- 12 vibrant colors offering a multitude of finishes
- 3-coat process
- Single day application with next-day return to service
- UV stable
- Optional traction additives for improved slip resistance
- Gloss, Satin or Matte finish available

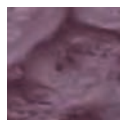
SYSTEM VARIATIONS	OVERALL THICKNESS	APPLICATIONS
ALPEN-GLOW™	16 mils DFT	Highly decorative coating application, most popular within retail showrooms and similar settings
ALPEN-GLOW PURE™	22 mils DFT	Minimal smell, VOC-Free. Ideal for interior (odor sensitive) environments.



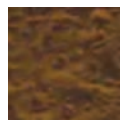
Cobalt Blue



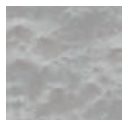
Copper



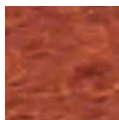
Royal Purple



Coffee



Chrome



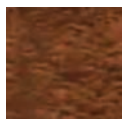
Electric Orange



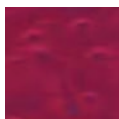
Arctic Ice



Spanish Gold



Walnut



Deep Cherry



Aspen Sunset



Gunmetal Grey

CURED SYSTEM PROPERTIES	SPARTA-GUARD™
Coefficient of Friction (ASTM C-1028)	dry: 0.83 wet: 0.98
Hardness (ASTM D 2240):	94
Abrasion Resistance (ASTM D-4060 mg loss):	22-28
Tensile Strength (ASTM D-638,D-2370 psi)	4500-5000
Substrate Adhesion (ASTM D-4541, psi)	400-500+, concrete fracture
Flammability: (ASTM D-635)	self extinguishing

For Additional Information call: 866-966-1DAY(1329) Or email: contact@hpspartacote.com

HP Spartacote® Inc.

810 Brickyard Circle #1 | Golden, CO 80403 | www.hpspartacote.com